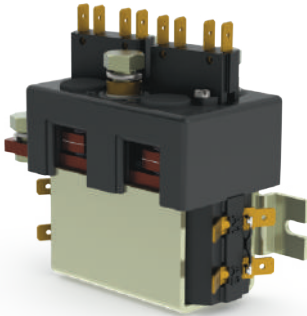
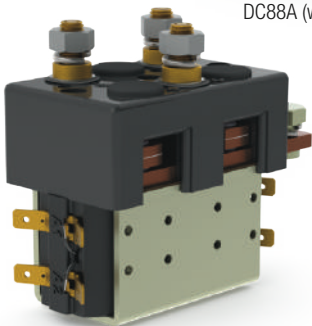


DISCONNECT SWITCHES

MODEL DC88



DC88A (with integral bracket)



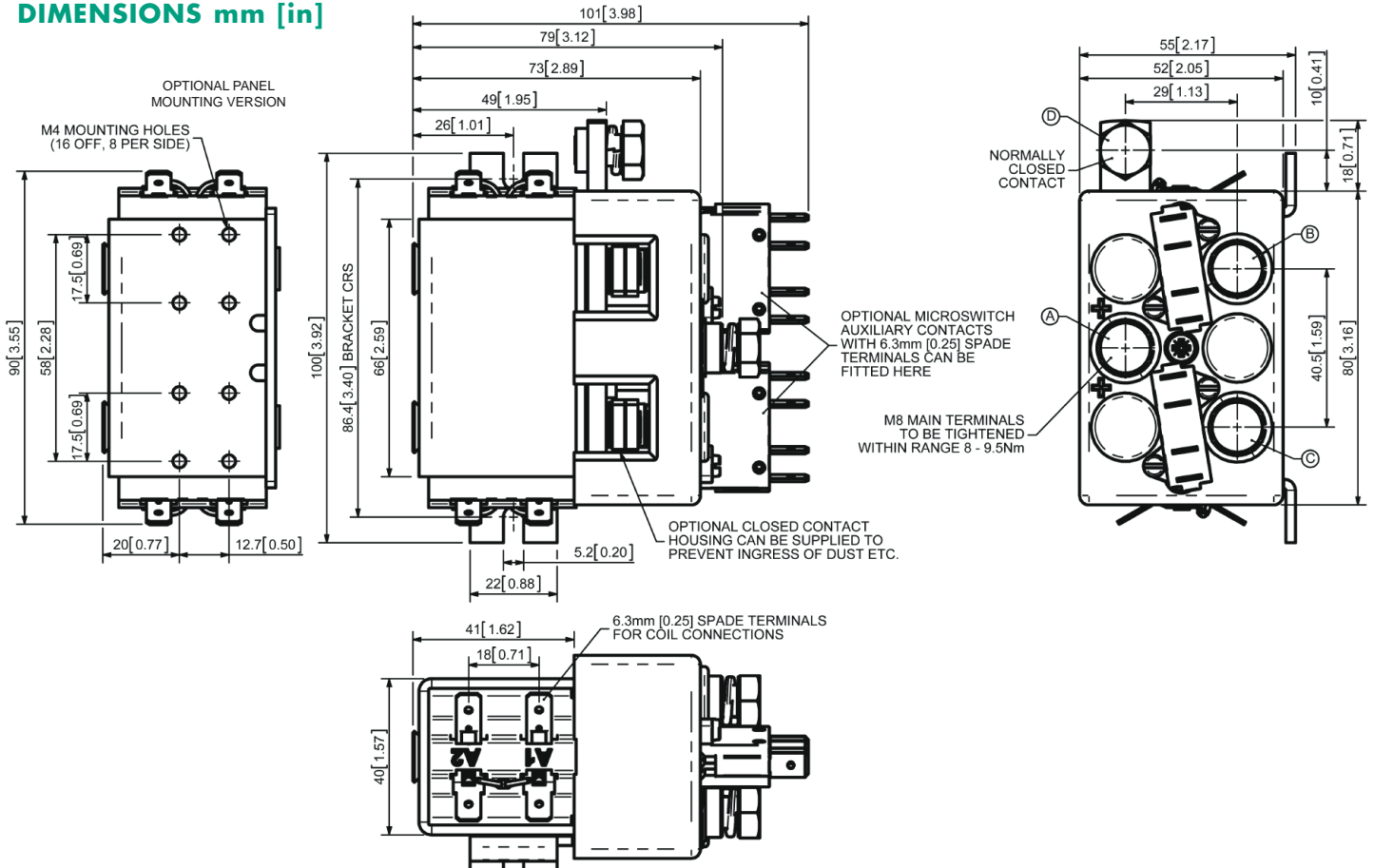
DC88 (with optional tapped holes)

The DC88 motor reversing type of contactor has been designed for direct current loads, particularly motors as used on electric vehicles such as industrial trucks. The DC88 is a monoblock construction, resulting in a compact design which is compatible with modern electronic control systems. Developed for both interrupted and uninterrupted loads, the DC88 is suitable for switching Resistive, Capacitive and Inductive loads.

- Interrupted current: opening and closing on load with frequent switching (results in increased contact resistance).
- Uninterrupted current: no or infrequent load switching requirements (maintains a lower contact resistance).

The main contact circuit, designed for motor reversing, has a built in failsafe, so that if both coils are energised simultaneously the contact arrangement is open circuit. The DC88 has double breaking main contacts with silver alloy contact tips, which are weld resistant, hard wearing and have excellent conductivity. The DC88 M8 main stud terminals can be configured in a variety of ways in order to suit the application. Coil connections are by means of 6.3mm spades and mounting is via the supplied bracket and can be horizontal or vertical, when vertical the M8 contact studs should point upwards. If the requirement is for downwards orientation we can adjust the contactor to compensate for this.

DIMENSIONS mm [in]



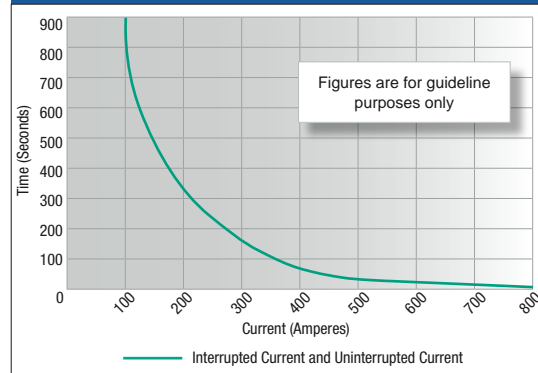
MODEL DC88

SPECIFICATIONS

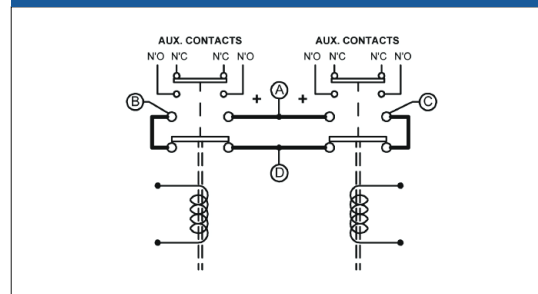
Application	Interrupted	Uninterrupted
Thermal Current Rating (I_{th})	100A	
Intermittent Current Rating:		
30% Duty	185A	
40% Duty	160A	
50% Duty	140A	
60% Duty	130A	
70% Duty	120A	
Rated Fault Current Breaking Capacity (I_{cn}) 5ms Time Constant: <i>(in accordance with UL583)</i>		
DC88	800A at 48V	
DC88B	600A at 80V	
Maximum Recommended Contact Voltages (U_p):		
DC88	48V D.C.	
DC88B	96V D.C.	
Typical Voltage Drop per pole across New Contacts at 100A:		
Normally Open	< 40mV	
Normally Closed	< 50mV	
Mechanical M.T.B.F	> 5 x 10 ⁶	
Coil Voltage Available (U_s) <i>(Rectifier board required for A.C.)</i>	From 6 to 240V D.C.	
Coil Power Dissipation:		
Highly Intermittent Rated Types	20 – 30 Watts	
Intermittently Rated types	15 – 20 Watts	
Prolonged Rated Types	13 – 15 Watts	
Continuously Rated Types	7 – 13 Watts	
Maximum Pull-In Voltage (Coil at 20° C) Guideline:		
Highly Intermittent Rated types (Max 25% Duty Cycle)	60% U_s	
Intermittently Rated types (Max 70% Duty Cycle)	60% U_s	
Prolonged Operation (Max 90% Duty Cycle)	60% U_s	
Continuously Rated Types (100% Duty Cycle)	66% U_s	
Drop-Out Voltage Range	10 – 25% U_s	
Typical Pull-In Time	20ms	
Typical Drop-Out Time (N/O Contacts to Open):		
Without Suppression	5ms	
With Diode Suppression	50ms	
With Diode and Resistor <i>(Subject to resistance value)</i>	8 – 20ms	
Typical Main Contact Changeover Time (milliseconds):		
Normally Closed to Normally Open	7ms	
Normally Open to Normally Closed	4ms	
Typical Contact Bounce Period	3ms	
Operating Ambient Temperature	-40°C to +60°C	
Guideline Contactor Weight:		
DC88	990 gms	
Per Auxiliary	+ 20 gms	
With Blowouts	+ 50 gms	
Auxiliary Thermal Current Rating	5A	
Auxiliary Contact Switching Capabilities (Resistive Load:)		
DC88	5A at 24V D.C.	
DC88	2A at 48V D.C.	
DC88	0.5A at 240V D.C.	

NOTE: Performance data provided should be used as a guide only. Some de-rating or variation from figures may be necessary according to application. Thermal current ratings stated are dependant upon the size of conductor being used.

DC88 Contactor Performance



Connection Diagram



DC88 Available Options

General		Suffix
Auxiliary Contacts	○	A
Auxiliary Contacts – V3	X	
Magnetic Blowouts†	○	B
Magnetic Blowouts – High Powered†	○	B
Armature Cap	○	
Mounting Brackets	○	
Magnetic Latching† (Not fail safe)	○	M
Closed Contact Housing†	○	
Environmentally Protected IP66	○	P
EE Type (Steel Shroud)	○	
Contacts		
Large Tips	○	L
Textured Tips	○	T
Silver Plating	X	
Coil		
AC Rectifier Board (Fitted)	○	
Coil Suppression†	○	
Flying Leads	○	F
Manual Override Operation	○	
M4 Stud Terminals	X	
M5 Terminal Board	○	
Vacuum Impregnation	○	

Key: Optional ○ Standard ● Not Available X

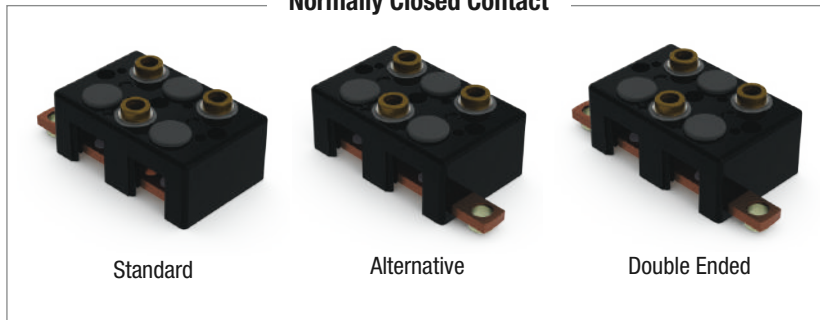
† Connections become polarity sensitive

‡ Open Housing Available

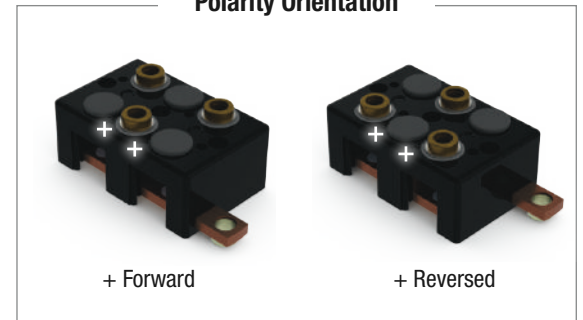
MODEL DC88

CONFIGURATION

Normally Closed Contact



Polarity Orientation



MAIN TERMINAL & MOUNTING OPTIONS

